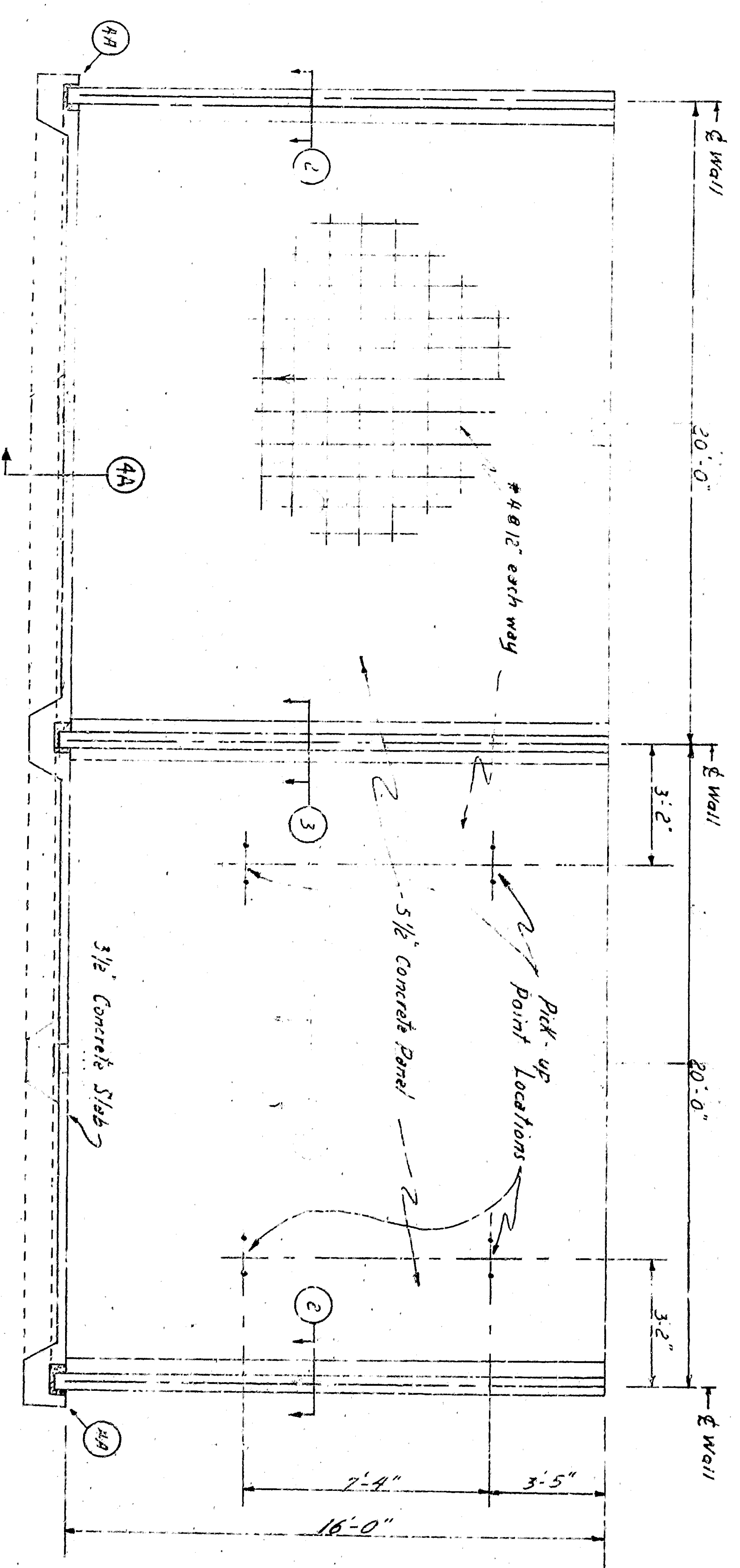
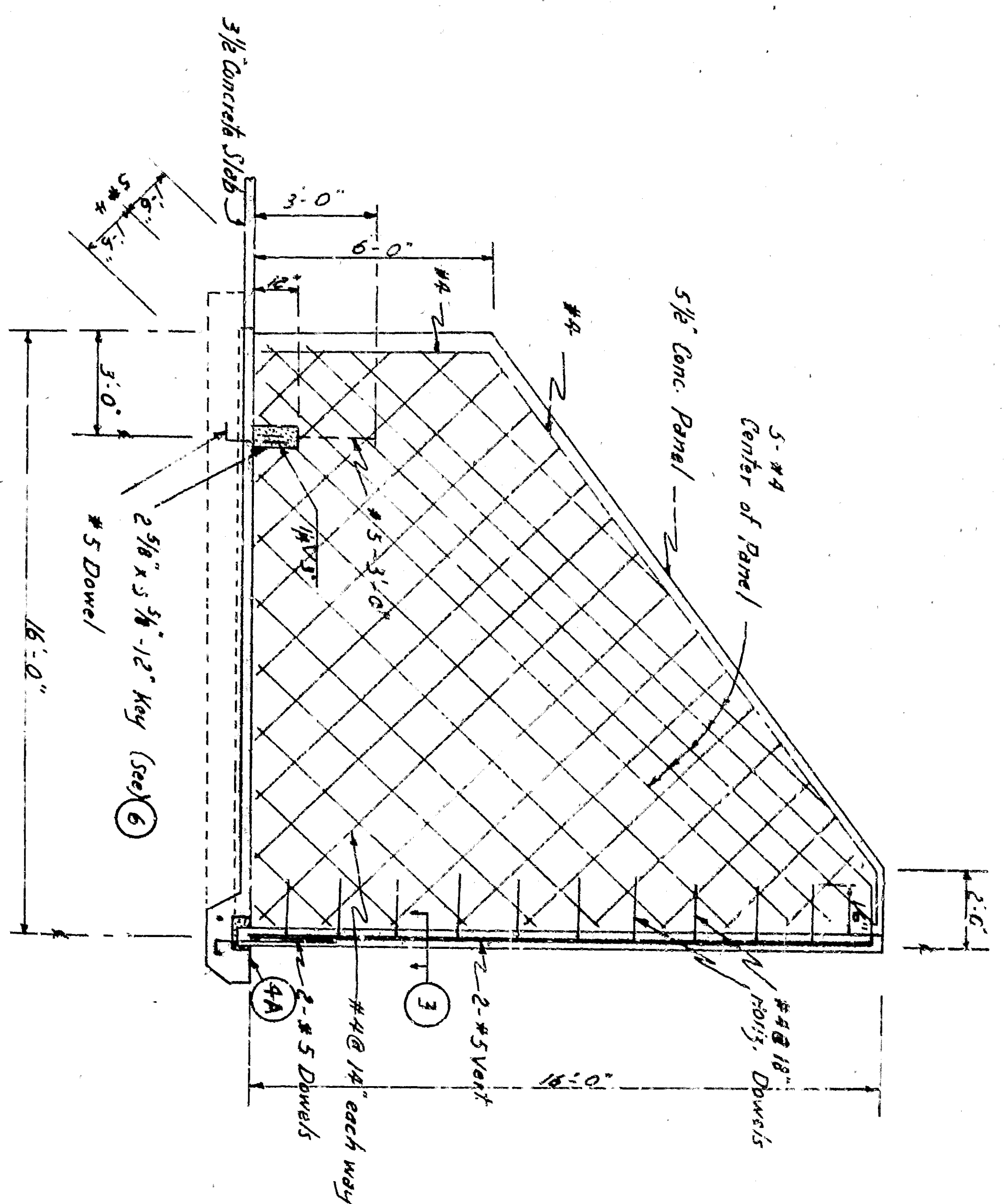


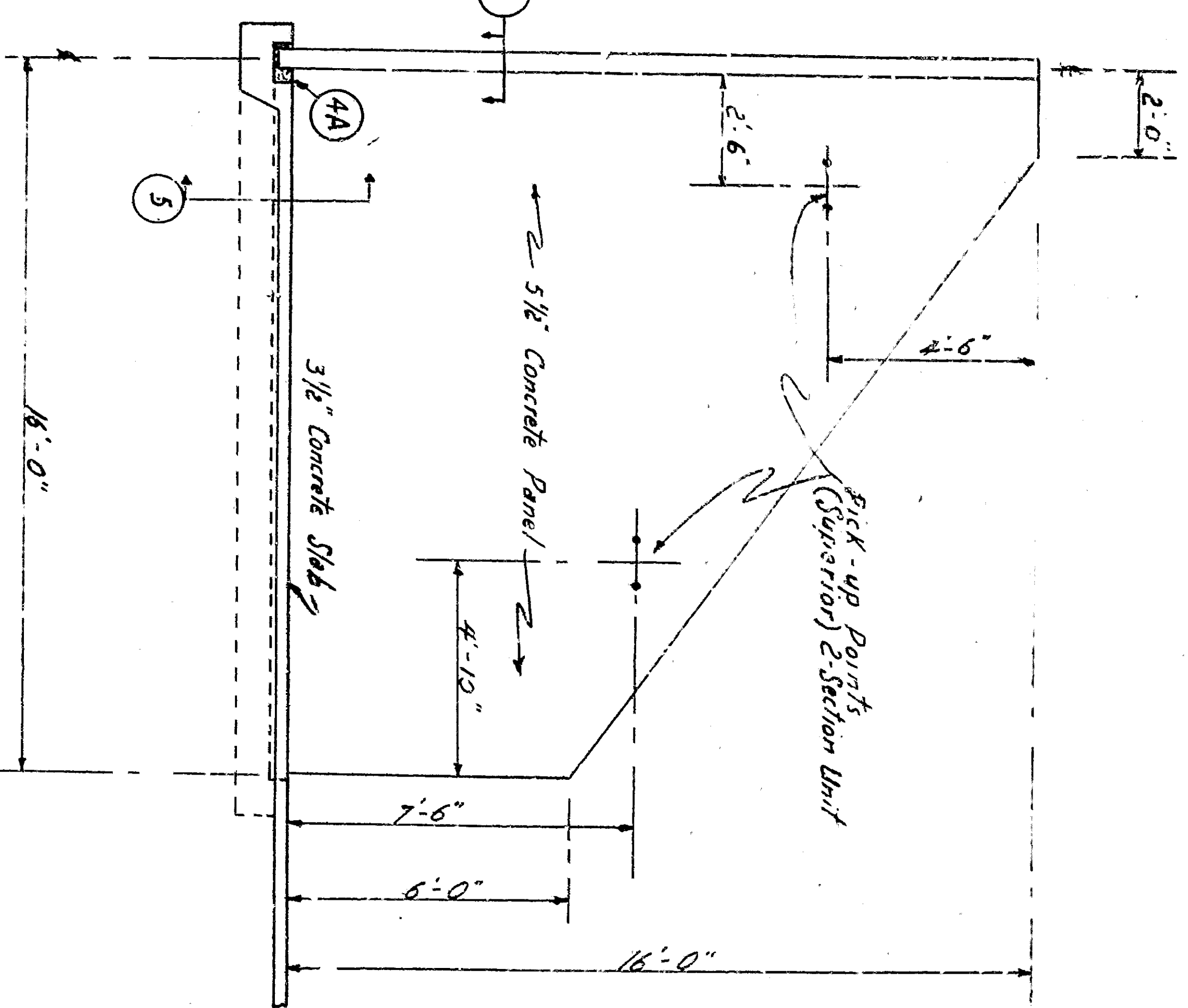
TYPICAL PLAN OF HANDBALL COURT & WALL PANELS
Scale 1/8" = 1'-0"



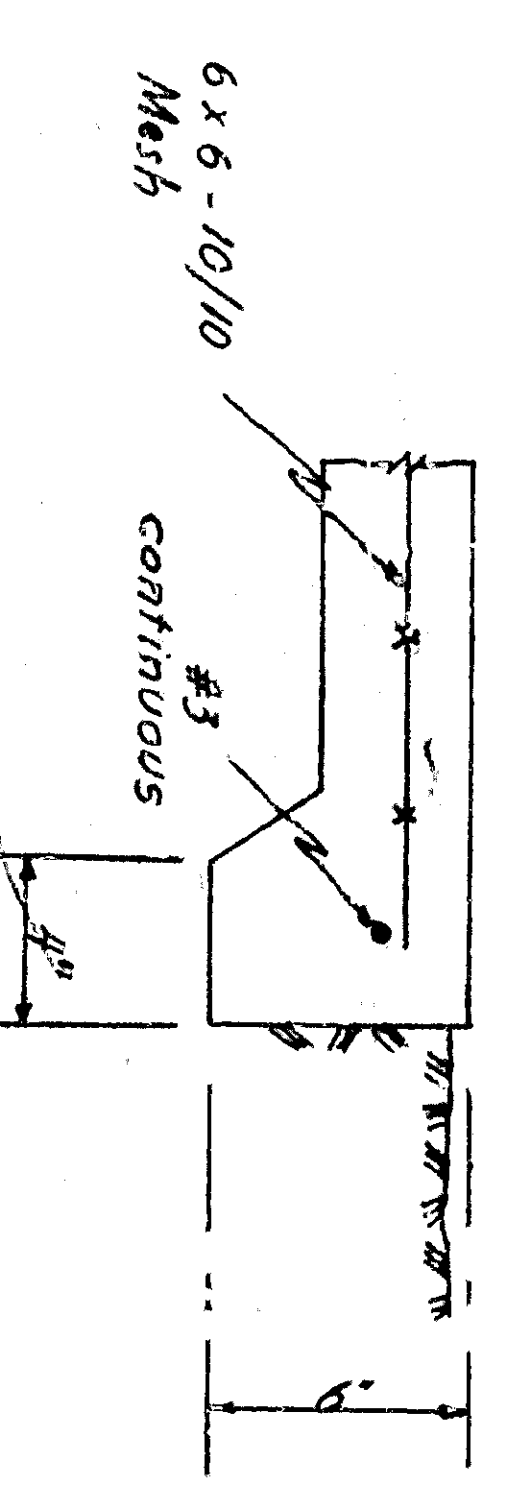
SECTION A-A
Scale 1/8" = 1'-0"



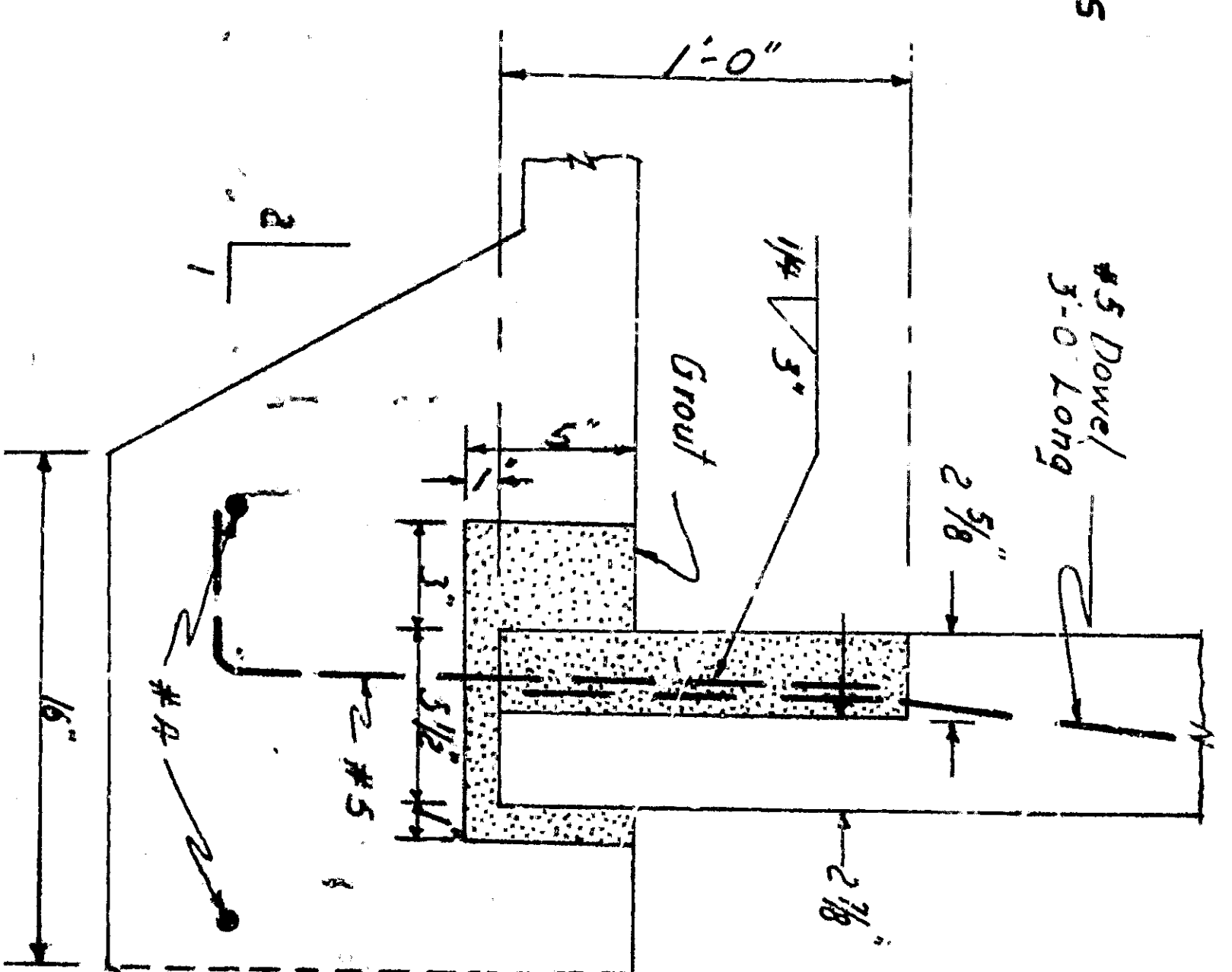
SECTION B-B
TYPICAL FOR ALL SIDEWALLS
Scale 1/8" = 1'-0"



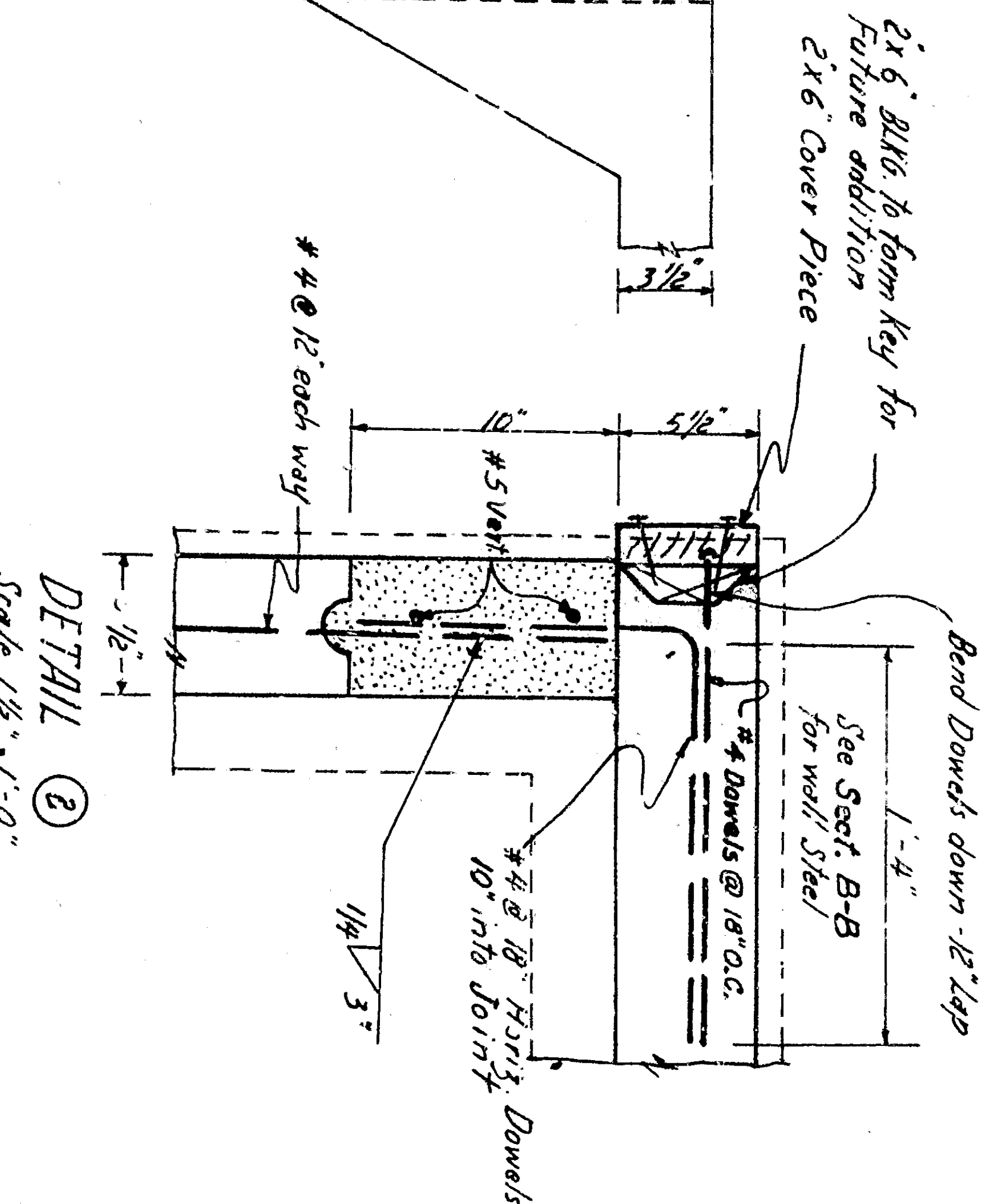
SECTION C-C
TYPICAL FOR ALL SIDEWALLS
Scale 1/8" = 1'-0"



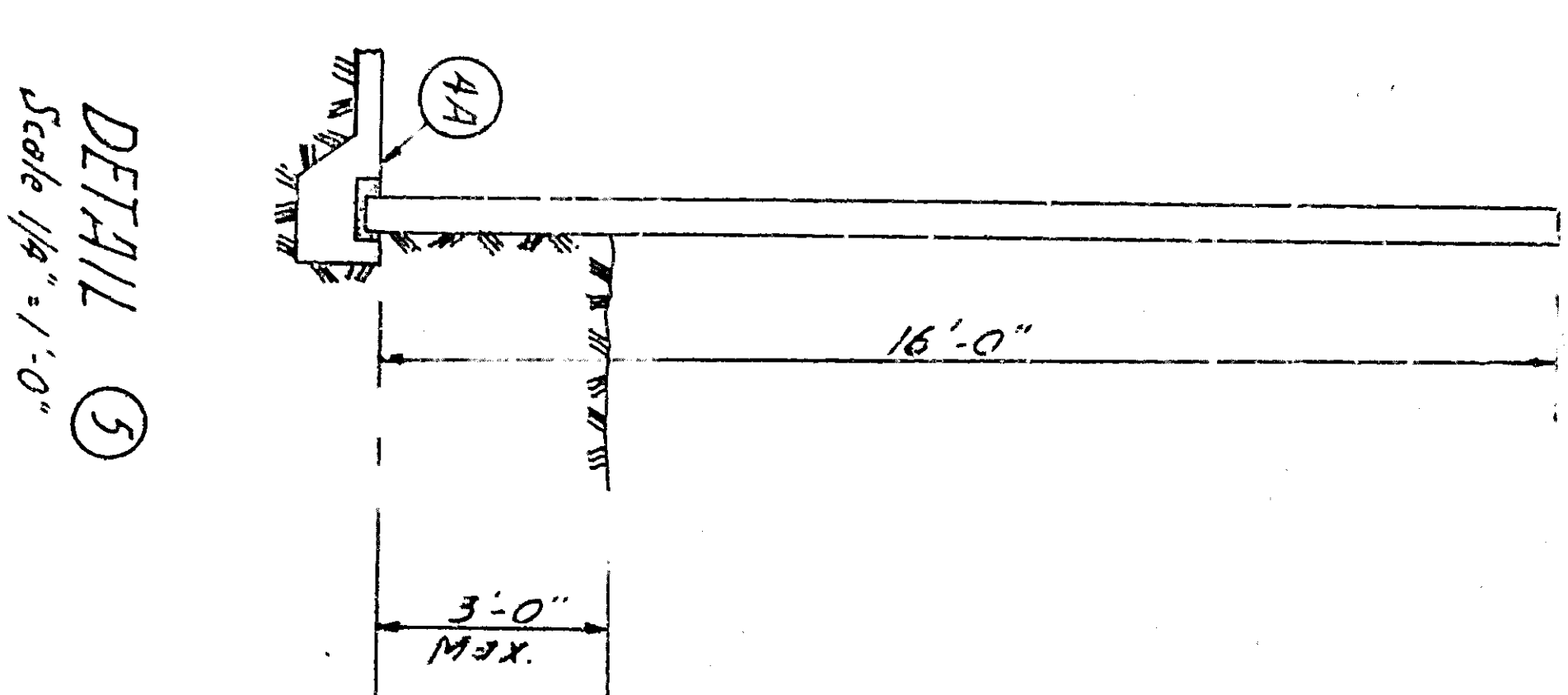
DETAIL 1
Scale 1/8" = 1'-0"



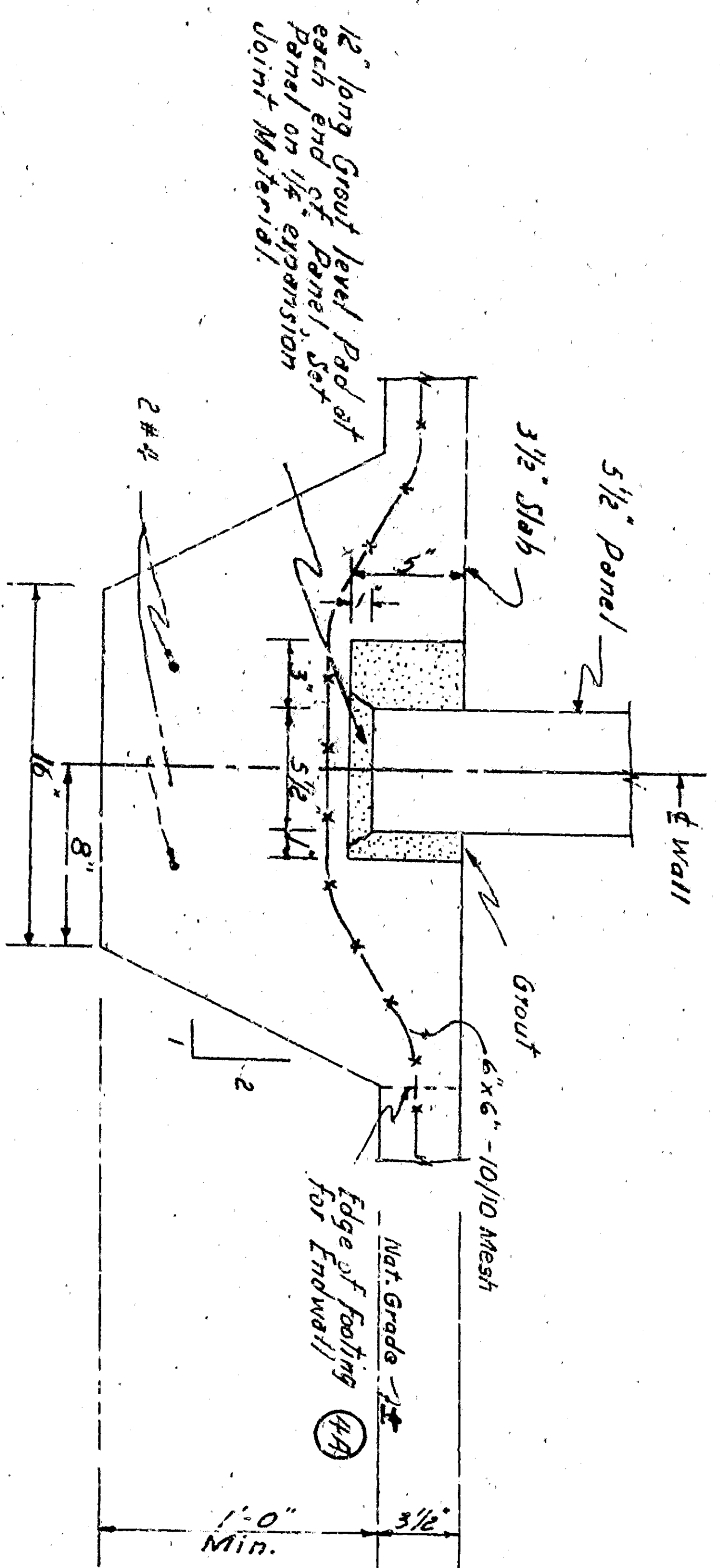
DETAIL 2
Scale 1/8" = 1'-0"



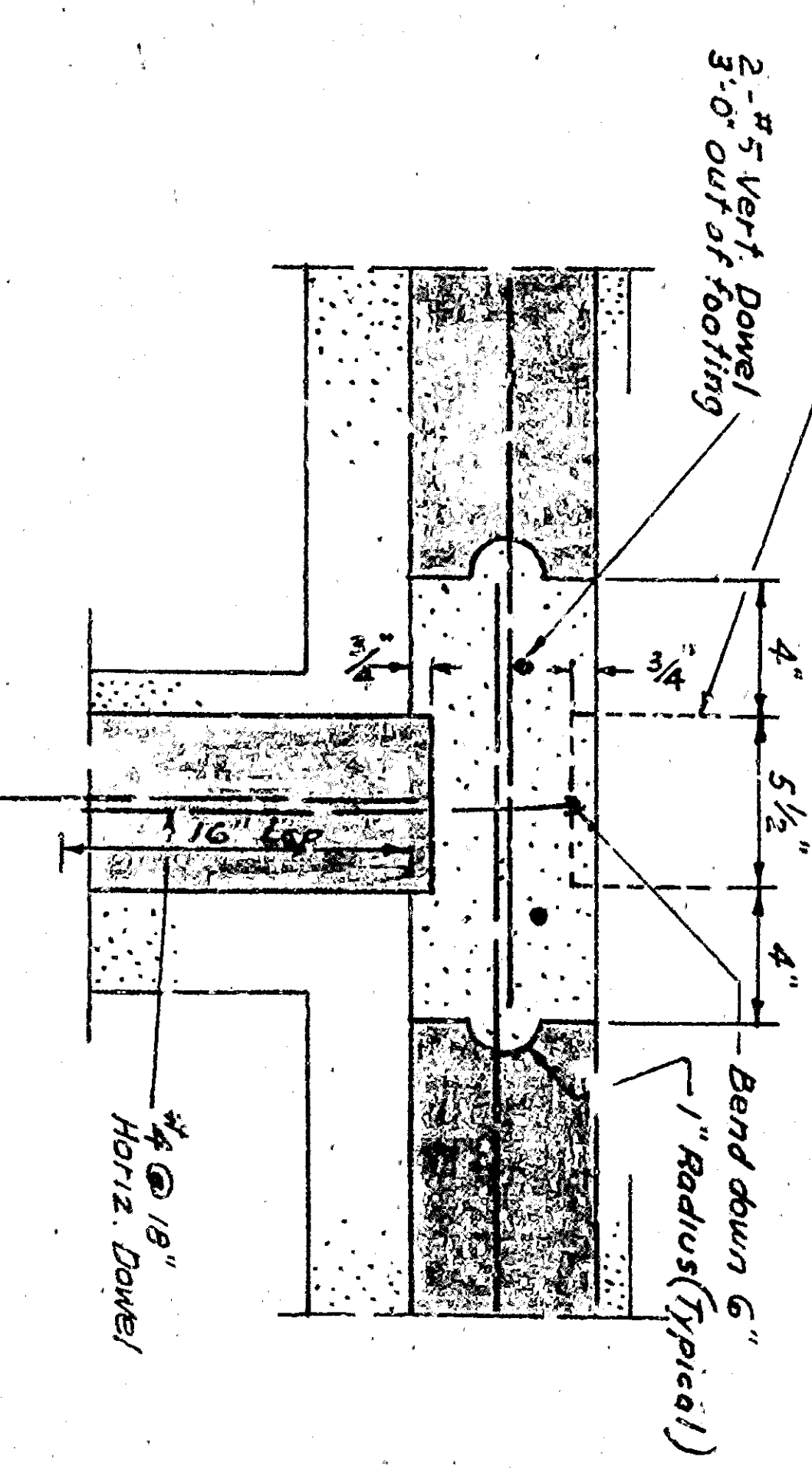
DETAIL 3
Scale 1/8" = 1'-0"



DETAIL 4
Scale 1/8" = 1'-0"



DETAIL 5
Scale 1/8" = 1'-0"



DETAIL 6
Scale 1/8" = 1'-0"

- GENERAL NOTES
1. Bottom of all footings to be 12" minimum below natural undisturbed grade.
 2. Wall panels shall not be poured until concrete has attained a minimum compressive strength of 2000 P.S.I. as determined by test.
 3. All work shall conform to the City of San Bernardino and Specifications and Specifications to Revised October 1961 and Special Provisions to 9/24/61.

APPROVED	REVISED FOR BLUE PRINT	25443
CITY ENGINEER		
DRAWING NO.	3744	
CHECKED BY		
DESIGNED BY		
DRAWN BY		
CITY OF SAN BERNARDINO	DEPARTMENT OF ENGINEERING	
PLANS AND PROFILES	HANDBALL COURTS	
SHEET 2 OF 3	ALBIR PARK	